

**OFFICER DELEGATION SCHEME
RECORD OF OPERATIONAL DECISION**

TO BE UPLOADED TO THE E-MEETINGS MANAGER

Date: 09.04.19	Ref No: 3276
-----------------------	---------------------

Type of Operational Decision:	
Executive Decision <input checked="" type="checkbox"/>	Council Decision <input type="checkbox"/>

Status: For publication

Title/Subject matter: Higher Ainsworth Road, Radcliffe – Temporary Road Closure

Budget/Strategy/Policy/Compliance – Is the decision:

(i) within an Approved Budget	√
(ii) not in conflict with Council Policy	√
(iii) not raising new issues of Policy	√

Equality Analysis [Does this decision change or make policy; change or make procedure or working practice? An Equality Analysis must be completed to assess the impact on equality and the relevance of the Public Sector Equality Duty. This should be signed off by your departmental equality representative and accompany this decision form. Please forward a copy to the Equality email for publication].	No	
	Signed: (By EA Officer)	Date:

Details of Operational Decision Taken [with reasons]:
 Approval ^{side roads off} to the temporary closure under Section 14(1) of the Road Traffic Regulation Act 1984, of Higher Ainsworth Road, Radcliffe between Wilton Lane and Grindsbrook Road from Monday 13 May 2019 for a period of 12 months to facilitate carriageway resurfacing (anticipated duration 4 weeks). Signed diversions will be in place when closures are required.

Decision taken by:	Signature:	Date:
D R Giblin Head of Engineering		11/04/19
Members Consulted [see note 1 below]		
Cabinet Member/Chair		

Lead Member		
Opposition Spokesperson		

Notes

1. It is not generally a requirement to consult with any Members on Operational Decisions but where an Executive Director considers it necessary to consult with the appropriate Cabinet Member and/or Lead Member, they must sign the form so as to confirm that they have been consulted and that they agree with the proposed action. The signature of the Opposition Spokesperson should be obtained to confirm that he/she has been consulted.
2. **This form must not be used for urgent decisions.**

January 2015

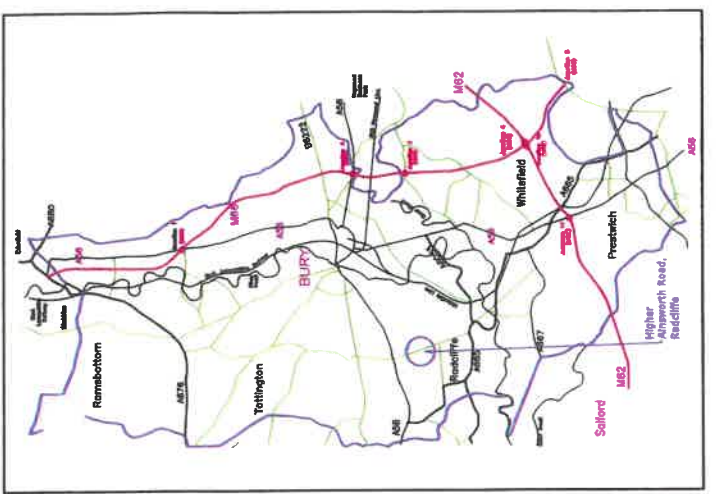
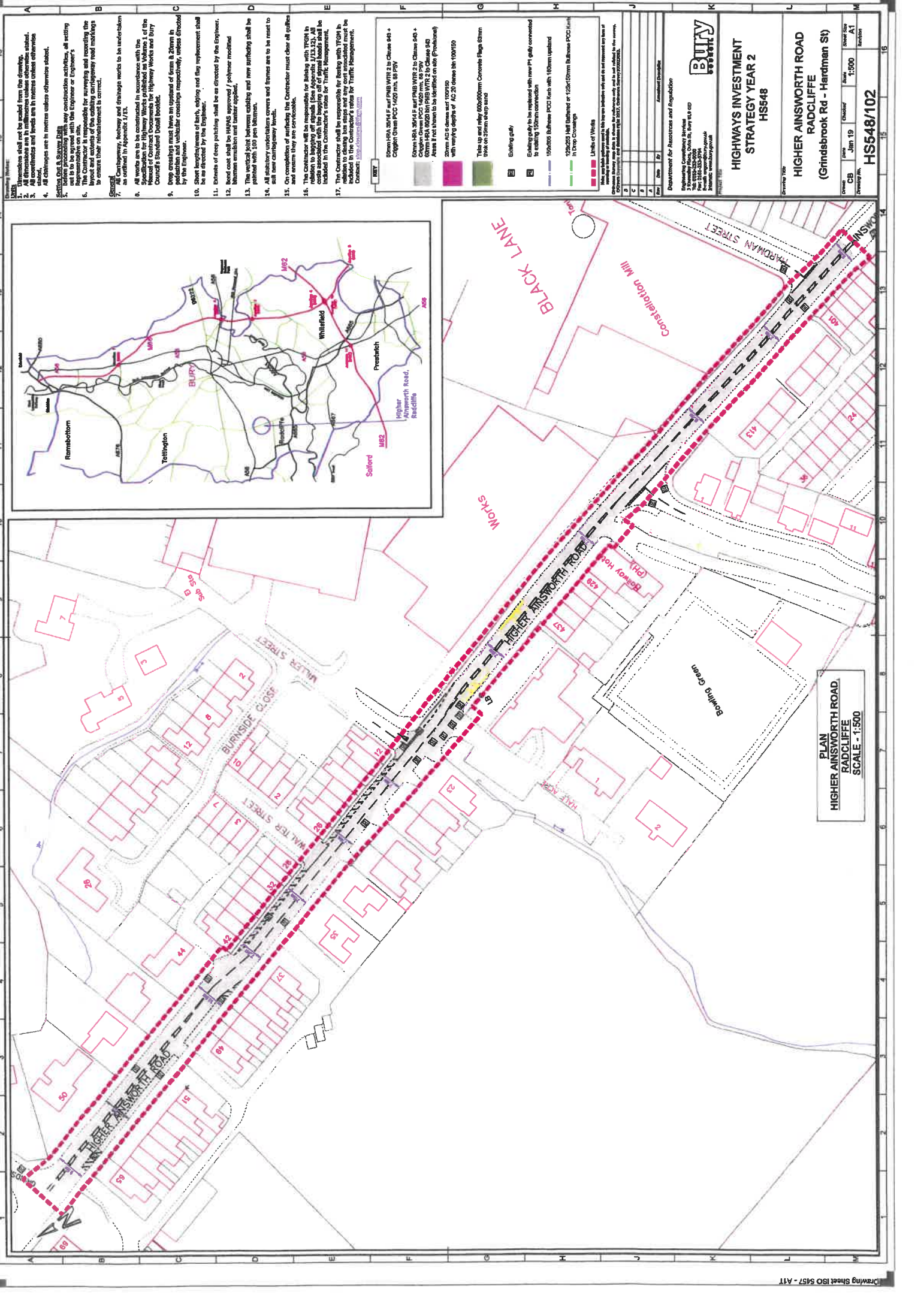
1532

TM3/19/1532

**BURY COUNCIL
PROPOSED TEMPORARY TRAFFIC CONTROL BY NOTICE
ROAD TRAFFIC REGULATION ACT 1984 SECTION 14(1)**

Name and Lengths of Road(s) Affected	Higher Ainsworth Road, Radcliffe - <i>side roads off.</i> Between Wilton Lane and Grindsbrook Road															
Reason for Notice/Order	To facilitate carriageway resurfacing works.															
Nature of Notice/Order	Temporary Closure															
Period of Notice/Order	12 months															
Date of Commencement of Notice/Order	Monday 13 May 2019															
Anticipated Duration of Works	4 weeks (between 13 May 2019 and 09 June 2019)															
Is the Emergency Procedure being invoked?	YES/NO Note: For an unforeseen crisis a road may be closed for up to 21 days															
Is a Temporary Order to be made?	YES/NO															
Description of Alternative Route(s)	Signed diversions will be in place when closures are required															
Have Notices been Posted?	YES/NO															
Name of Person to be Contacted for Further Information.	Joe Goldstone Tel: 0161-253-5830															
Emergency Closures - Have the following been informed?	<table border="0"> <tr> <td>Police</td> <td>YES/NO</td> <td></td> </tr> <tr> <td>Fire</td> <td>YES/NO</td> <td>NOT</td> </tr> <tr> <td>Ambulance</td> <td>YES/NO</td> <td>APPLICABLE</td> </tr> <tr> <td>TfGM</td> <td>YES/NO</td> <td></td> </tr> <tr> <td>Streetworks</td> <td>YES/NO</td> <td></td> </tr> </table>	Police	YES/NO		Fire	YES/NO	NOT	Ambulance	YES/NO	APPLICABLE	TfGM	YES/NO		Streetworks	YES/NO	
Police	YES/NO															
Fire	YES/NO	NOT														
Ambulance	YES/NO	APPLICABLE														
TfGM	YES/NO															
Streetworks	YES/NO															
Recharge Code	465 HAM3000 5641 H															

Head of Engineering  Date 11/04/19



1. Dimensions shall not be scaled from the drawing.
2. All dimensions are in millimetres unless otherwise stated.
3. All coordinates and levels are in British datum unless otherwise stated.
4. All dimensions are in metres unless otherwise stated.
5. **SETTING OUT & SURVEY DATA**
6. All works shall be carried out in accordance with the Specification for Highway Works published by Volume 1 of the Standard of Contract Documents for Highway Works and Bury Council's Standard Detail Booklet.
7. Drop curbs shall have an upward of 5mm to 20mm in order to prevent water from entering the road surface.
8. All works shall be carried out in accordance with the Specification for Highway Works published by Volume 1 of the Standard of Contract Documents for Highway Works and Bury Council's Standard Detail Booklet.
9. Drop curbs shall have an upward of 5mm to 20mm in order to prevent water from entering the road surface.
10. Street furniture, signs, lighting and flag replacement shall be as directed by the Engineer.
11. Extents of deep patching shall be as directed by the Engineer.
12. Road coat shall be HPGMS approved / polymer modified bitumen emulsion and 'taster' applied.
13. The vertical joint between existing and new surfacing shall be paved with 100 per bitumen.
14. All subsidiary underdrains covers and frames are to be reset to all new carriageway levels.
15. On completion of surfacing the Contractor must clear all gullies and ensure they are serviceable.
16. The Contractor will be responsible for liaising with TfGM in relation to signing off signals. (See Appendix J13.13, All works shall be carried out in accordance with the Specification for Highway Works published by Volume 1 of the Standard of Contract Documents for Highway Works and Bury Council's Standard Detail Booklet).
17. The Contractor shall be responsible for liaising with TfGM in relation to closing bus stops and any cost associated must be included in the Contractor's rates for Traffic Management.

ITEM	DESCRIPTION
1	30mm HMA 30/40 P surf P18B W18.2 to 20mm sets + Capped Green PCC 1420 mm, 10 P19Y
2	50mm HMA 30/40 P surf P18B W18.2 to 20mm sets + Capped Green PCC 1420 mm, 10 P19Y
3	60mm HMA 30/40 P surf P18B W18.2 to 20mm sets + Capped Green PCC 1420 mm, 10 P19Y
4	Areas if not shown to be detailed on site (Profiled)
5	20mm AC 6 dense wear P19C10P with varying depths of AC 20 below 100/150
6	30mm AC 6 dense wear P19C10P with varying depths of AC 20 below 100/150
7	30mm AC 6 dense wear P19C10P with varying depths of AC 20 below 100/150
8	30mm AC 6 dense wear P19C10P with varying depths of AC 20 below 100/150
9	30mm AC 6 dense wear P19C10P with varying depths of AC 20 below 100/150
10	30mm AC 6 dense wear P19C10P with varying depths of AC 20 below 100/150
11	30mm AC 6 dense wear P19C10P with varying depths of AC 20 below 100/150
12	30mm AC 6 dense wear P19C10P with varying depths of AC 20 below 100/150
13	30mm AC 6 dense wear P19C10P with varying depths of AC 20 below 100/150
14	30mm AC 6 dense wear P19C10P with varying depths of AC 20 below 100/150
15	30mm AC 6 dense wear P19C10P with varying depths of AC 20 below 100/150
16	30mm AC 6 dense wear P19C10P with varying depths of AC 20 below 100/150
17	30mm AC 6 dense wear P19C10P with varying depths of AC 20 below 100/150
18	30mm AC 6 dense wear P19C10P with varying depths of AC 20 below 100/150
19	30mm AC 6 dense wear P19C10P with varying depths of AC 20 below 100/150
20	30mm AC 6 dense wear P19C10P with varying depths of AC 20 below 100/150
21	30mm AC 6 dense wear P19C10P with varying depths of AC 20 below 100/150
22	30mm AC 6 dense wear P19C10P with varying depths of AC 20 below 100/150
23	30mm AC 6 dense wear P19C10P with varying depths of AC 20 below 100/150
24	30mm AC 6 dense wear P19C10P with varying depths of AC 20 below 100/150
25	30mm AC 6 dense wear P19C10P with varying depths of AC 20 below 100/150
26	30mm AC 6 dense wear P19C10P with varying depths of AC 20 below 100/150
27	30mm AC 6 dense wear P19C10P with varying depths of AC 20 below 100/150
28	30mm AC 6 dense wear P19C10P with varying depths of AC 20 below 100/150
29	30mm AC 6 dense wear P19C10P with varying depths of AC 20 below 100/150
30	30mm AC 6 dense wear P19C10P with varying depths of AC 20 below 100/150
31	30mm AC 6 dense wear P19C10P with varying depths of AC 20 below 100/150
32	30mm AC 6 dense wear P19C10P with varying depths of AC 20 below 100/150
33	30mm AC 6 dense wear P19C10P with varying depths of AC 20 below 100/150
34	30mm AC 6 dense wear P19C10P with varying depths of AC 20 below 100/150
35	30mm AC 6 dense wear P19C10P with varying depths of AC 20 below 100/150
36	30mm AC 6 dense wear P19C10P with varying depths of AC 20 below 100/150
37	30mm AC 6 dense wear P19C10P with varying depths of AC 20 below 100/150
38	30mm AC 6 dense wear P19C10P with varying depths of AC 20 below 100/150
39	30mm AC 6 dense wear P19C10P with varying depths of AC 20 below 100/150
40	30mm AC 6 dense wear P19C10P with varying depths of AC 20 below 100/150
41	30mm AC 6 dense wear P19C10P with varying depths of AC 20 below 100/150
42	30mm AC 6 dense wear P19C10P with varying depths of AC 20 below 100/150
43	30mm AC 6 dense wear P19C10P with varying depths of AC 20 below 100/150
44	30mm AC 6 dense wear P19C10P with varying depths of AC 20 below 100/150
45	30mm AC 6 dense wear P19C10P with varying depths of AC 20 below 100/150
46	30mm AC 6 dense wear P19C10P with varying depths of AC 20 below 100/150
47	30mm AC 6 dense wear P19C10P with varying depths of AC 20 below 100/150
48	30mm AC 6 dense wear P19C10P with varying depths of AC 20 below 100/150
49	30mm AC 6 dense wear P19C10P with varying depths of AC 20 below 100/150
50	30mm AC 6 dense wear P19C10P with varying depths of AC 20 below 100/150
51	30mm AC 6 dense wear P19C10P with varying depths of AC 20 below 100/150
52	30mm AC 6 dense wear P19C10P with varying depths of AC 20 below 100/150
53	30mm AC 6 dense wear P19C10P with varying depths of AC 20 below 100/150
54	30mm AC 6 dense wear P19C10P with varying depths of AC 20 below 100/150
55	30mm AC 6 dense wear P19C10P with varying depths of AC 20 below 100/150
56	30mm AC 6 dense wear P19C10P with varying depths of AC 20 below 100/150
57	30mm AC 6 dense wear P19C10P with varying depths of AC 20 below 100/150
58	30mm AC 6 dense wear P19C10P with varying depths of AC 20 below 100/150
59	30mm AC 6 dense wear P19C10P with varying depths of AC 20 below 100/150
60	30mm AC 6 dense wear P19C10P with varying depths of AC 20 below 100/150
61	30mm AC 6 dense wear P19C10P with varying depths of AC 20 below 100/150
62	30mm AC 6 dense wear P19C10P with varying depths of AC 20 below 100/150
63	30mm AC 6 dense wear P19C10P with varying depths of AC 20 below 100/150
64	30mm AC 6 dense wear P19C10P with varying depths of AC 20 below 100/150
65	30mm AC 6 dense wear P19C10P with varying depths of AC 20 below 100/150
66	30mm AC 6 dense wear P19C10P with varying depths of AC 20 below 100/150
67	30mm AC 6 dense wear P19C10P with varying depths of AC 20 below 100/150
68	30mm AC 6 dense wear P19C10P with varying depths of AC 20 below 100/150
69	30mm AC 6 dense wear P19C10P with varying depths of AC 20 below 100/150
70	30mm AC 6 dense wear P19C10P with varying depths of AC 20 below 100/150
71	30mm AC 6 dense wear P19C10P with varying depths of AC 20 below 100/150
72	30mm AC 6 dense wear P19C10P with varying depths of AC 20 below 100/150
73	30mm AC 6 dense wear P19C10P with varying depths of AC 20 below 100/150
74	30mm AC 6 dense wear P19C10P with varying depths of AC 20 below 100/150
75	30mm AC 6 dense wear P19C10P with varying depths of AC 20 below 100/150
76	30mm AC 6 dense wear P19C10P with varying depths of AC 20 below 100/150
77	30mm AC 6 dense wear P19C10P with varying depths of AC 20 below 100/150
78	30mm AC 6 dense wear P19C10P with varying depths of AC 20 below 100/150
79	30mm AC 6 dense wear P19C10P with varying depths of AC 20 below 100/150
80	30mm AC 6 dense wear P19C10P with varying depths of AC 20 below 100/150
81	30mm AC 6 dense wear P19C10P with varying depths of AC 20 below 100/150
82	30mm AC 6 dense wear P19C10P with varying depths of AC 20 below 100/150
83	30mm AC 6 dense wear P19C10P with varying depths of AC 20 below 100/150
84	30mm AC 6 dense wear P19C10P with varying depths of AC 20 below 100/150
85	30mm AC 6 dense wear P19C10P with varying depths of AC 20 below 100/150
86	30mm AC 6 dense wear P19C10P with varying depths of AC 20 below 100/150
87	30mm AC 6 dense wear P19C10P with varying depths of AC 20 below 100/150
88	30mm AC 6 dense wear P19C10P with varying depths of AC 20 below 100/150
89	30mm AC 6 dense wear P19C10P with varying depths of AC 20 below 100/150
90	30mm AC 6 dense wear P19C10P with varying depths of AC 20 below 100/150
91	30mm AC 6 dense wear P19C10P with varying depths of AC 20 below 100/150
92	30mm AC 6 dense wear P19C10P with varying depths of AC 20 below 100/150
93	30mm AC 6 dense wear P19C10P with varying depths of AC 20 below 100/150
94	30mm AC 6 dense wear P19C10P with varying depths of AC 20 below 100/150
95	30mm AC 6 dense wear P19C10P with varying depths of AC 20 below 100/150
96	30mm AC 6 dense wear P19C10P with varying depths of AC 20 below 100/150
97	30mm AC 6 dense wear P19C10P with varying depths of AC 20 below 100/150
98	30mm AC 6 dense wear P19C10P with varying depths of AC 20 below 100/150
99	30mm AC 6 dense wear P19C10P with varying depths of AC 20 below 100/150
100	30mm AC 6 dense wear P19C10P with varying depths of AC 20 below 100/150

Department for Resources and Regulation

BURY

Highways Investment Strategy Year 2

HS548

HIGHER AINSWORTH ROAD
RADCLIFFE
(Grindsbrook Rd - Hardman St)

Project No: HS548/102

Issue No: 1

Issue Date: 15/06/2023

Issue Description: Final Design

Author: [Name]

Check: [Name]

Scale: 1:500

Sheet No: A1

Block: B010

PLAN
HIGHER AINSWORTH ROAD,
RADCLIFFE
SCALE - 1:500